

Commercial Warehouse

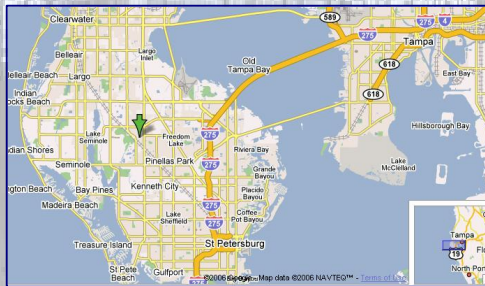
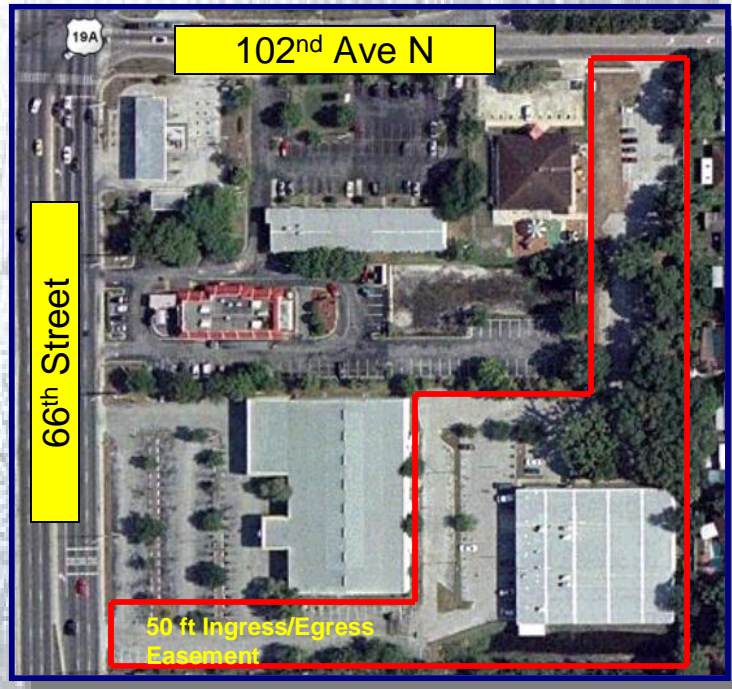
10001 66th Street North, Pinellas Park, Florida 33781

Presented by Broderick and Associates, Inc.

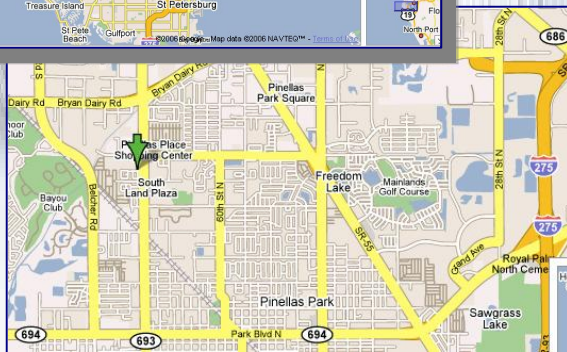
5514 Park Blvd Pinellas Park, FL 33781

(727) 544-1403

- 22,400 Sq Feet
- Climate Controlled
- Wet Fire Sprinkle System
- Heavy Electrical Service
- Lot Size: 2.642 acres
- Parking Spaces: 151 (Possible conversion to storage)
- Access from two main roads, with 66th Street N average daily traffic count of 34,500
- Existing signage on both 66th Street N and 102th Ave N



Located in the heart of Pinellas Park, Florida. Pinellas is known as the most densely populated county in Florida. As of the census of 2005, there were 928,797 people and 414,427 households in the county. Pinellas Park has continuously been recognized for its residential and business/commercial growth and friendly development community.



- Excellent location close to main traffic areas and densely populated residential

Offered for Sale \$1,450,000
Contact Roger Broderick, CCIM

Commercial Warehouse

10001 66th Street North, Pinellas Park, Florida 33781

Presented by Broderick and Associates, Inc.

5514 Park Blvd, Pinellas Park, FL 33781

(727) 544-1403

Pinellas County Demographics Overview

Business Summary Report

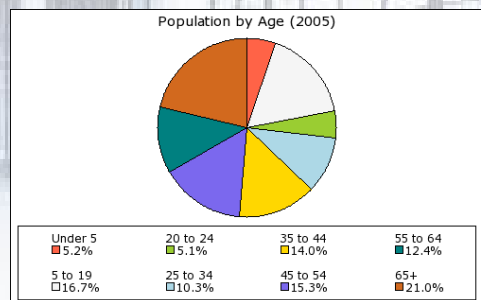
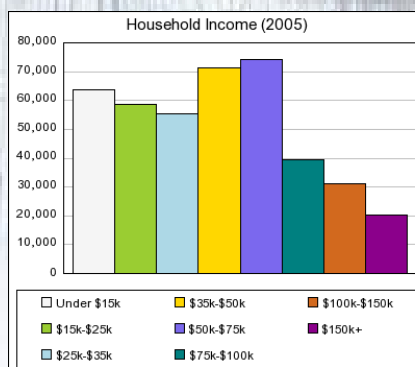
2005 Business Summary	
Total Employees	429,751
Total Establishments	38,789
Average Employee Size	11

2005 by Employee Size	Count	%
1-4 Employees	24,382	62.86%
5-9 Employees	6,958	17.94%
10-19 Employees	3,699	9.54%
20-49 Employees	2,265	5.84%
50-99 Employees	803	2.07%
100-249 Employees	527	1.36%
250-499 Employees	77	0.20%
500-999 Employees	48	0.12%
1,000+ Employees	30	0.08%

2005 Employees By Occupation	Count	%
"White Collar" Employees		
Administrative Support Workers	268,026	62.37%
Executive Managers & Administrators	81,671	19.00%
Professional Specialty Occupations	51,186	11.91%
Sales Professionals	62,844	14.62%
Sales Workers & Clerks	13,422	3.12%
Technical Sales & Administrative	39,254	9.13%
Technologies & Technicians	1,910	0.44%
	17,739	4.13%
"Blue Collar" Employees		
Construction, Repair & Mining	161,206	37.51%
Farming, Forestry & Fishing	12,342	2.87%
Handlers, Helpers & Laborers	13,369	3.11%
Machine Operators, Assemblers & Inspectors	10,904	2.54%
Other Services Field Based	8,870	2.06%
Other Services Site Based	2,189	0.51%
Precision Craft & Repair	56,945	13.25%
Private Household Service	37,152	8.64%
Protective Services	8	0.00%
Transportation & Materials Moving Workers	6,924	1.61%
	12,503	2.91%

Demographic Snapshot

Housing Units	1990 Census	2000 Census	2005 Estimate	2010 Projection	1990 to 2000	2005 to 2010
Total Housing Units	458,338	481,573	487,696	486,624	5.10%	-0.20%
Owner-Occupied	263,388	293,866	296,219	298,272	11.60%	0.70%
Renter-Occupied	117,248	121,102	118,208	115,244	3.30%	-2.50%
Vacant	77,706	66,605	73,269	73,108	-14.30%	-0.20%
Population						
Total Population	851,659	921,482	928,797	935,242	8.20%	0.70%
Total Households	380,636	414,968	414,427	413,516	9.00%	-0.20%



Note: All data retrieved from CCIM Site to Do Business